



YOUTH WORK AS A TOOL FOR
INCLUSION INFO-PACK

YWI

***YOUTH WORK AS A TOOL FOR INCLUSION
TRAINING COURSE WITHIN ERASMUS+***

14TH OF MARS - 20TH OF MARS 2022
STOCKHOLM, SWEDEN

HOSTING ORGANISATION: WOMAN & YOUTH EMPOWERMENT SWEDEN
CONTACT: ADMIN@WOMANANDYOUTHEMPOWERMENT.COM

HERE YOU CAN FIND

- ***THE PROJECT: YWI***
- ***GOALS SET FOR THE PROJECT***
- ***PARTNERS & PARTICIPANTS***
- ***PARTNERS INVOLVED IN THE PROJECT***
- ***TRAVEL***
- ***REIMBURSEMENT***
- ***LANGUAGE OF THE TC***
- ***TRAVEL***
- ***REIMBURSEMENT***
- ***VENUE***
- ***IMPORTANT ADRESS YOU MIGHT FIND IN THE MAPS***
- ***ACCOMODATION***
- ***HEALTH INSURANCE***
- ***PREPARATION OF PARTICIPANTS***
- ***WHAT TO BRING***

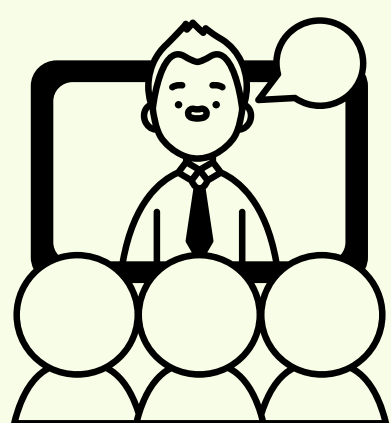
THE PROJECT

- AS AN AIM TO GO FURTHER WITH THE IDEA OF YOUTH EMPOWERMENT AND INCLUSION OF YOUNG PEOPLE, ESPECIALLY THOSE FACING DIFFICULTIES THE MOST IN OUR SOCIETIES (FEWER OPPORTUNITIES, NEET, REFUGEES, MIGRANTS, YOUNGSTERS FACING SOCIAL, ECONOMIC, EDUCATIONAL AND GEOGRAPHICAL OBSTACLES)
- THIS PROJECT CAME TO AN IDEA OF DEVELOPING SOCIAL NETWORKING, SOCIAL COHESION, SOCIAL ENGAGEMENT SKILLS AND BUILDING UP SOFT SKILLS NEEDED FOR YOUNG PEOPLE TO FACE THESE CHALLENGES TO DEVELOP STRONG NETWORK ABROAD (IN ORDER TO GIVE MORE OPPORTUNITIES FOR OUR YOUNGSTERS, BREAK STEREOTYPES AND DEVELOP THEIR AWARENESS ON THE INTERCULTURAL REALITY WE LIVE NOWADAYS) AND BETTER EQUIP OUR YOUTH WORKERS TOWARDS A BETTER INDIVIDUAL AND SOCIAL DEVELOPMENT OF OUR YOUNG VOLUNTEERS. INDEED, BY DOING THIS, WE AIM TO CONTRIBUTE TO SOCIAL INCLUSION VIA YOUTH WORK - THE WORK WE DEVELOP IN OUR NGOS W/ THE YOUNGSTERS.

GOALS SET FOR THE PROJECT



- TO UNDERSTAND HOW YOUTH WORK CAN BETTER SUPPORT YOUTH DEVELOPMENT.
- TO BETTER UNDERSTAND SOCIAL INCLUSION, ITS RELATION WITH YOUTH WORK AND YOUTH MOBILITY.
- GET TO KNOW HOW TO REACH YOUTH EMPOWERMENT THROUGH QUALITY PROJECTS; DEVELOP PARTNERSHIPS.
- DEVELOP BETTER OPPORTUNITIES FOR YOUTH.
- WORK ON INCLUSION, ESPECIALLY OF THOSE WITH FEWER OPPORTUNITIES.
- EXPLORE YOUTH WORK, YOUTH PARTICIPATION AND YOUTH GOALS FOR STRUCTURED DIALOGUE.
- DELIVER A BETTER SUPPORT FOR NGOS TO FEEL EMPOWERED TO SUPPORT YOUNG PEOPLE WITH EUROPEAN OPPORTUNITIES.
- WORK ON DIFFICULTIES NGOS FACE AROUND EUROPE IN MATTER OF YOUTH PARTICIPATION, SHARE BEST PRACTICES FROM PARTNERS.
- GATHER PARTNERS WITH DIFFERENT EXPERIENCES AND SHARE OUR KNOWLEDGE AND EXPERIENCE TOWARDS PROJECTS QUALITY IMPROVEMENT, YOUTH PARTICIPATION AND INCLUSION.
- EXPLORE THE CONCEPT OF NON FORMAL EDUCATION AND SOFT SKILLS FOR YOUNG PEOPLE AND YOUTH WORKERS.
- EXPLORE YOUTHPASS AS A TOOL FOR CERTIFICATION AND REFLECTION.



THIS PROJECT COMBINES A MIX OF SESSIONS BETWEEN TRAINING COURSE AND SEMINAR, IN ORDER TO BETTER EXCHANGE KNOWLEDGE AND EXPERIENCE AND TAKE THE MOST OF THE LEARNING EXPERIENCE.

THE PARTICIPANTS WILL BE TRAINED ON TOPICS RELATED TO **PROJECT DEVELOPMENT**, BUT THERE WILL BE ALSO SEMINAR SESSIONS, WHEN PARTNERS WILL SHARE EXPERIENCE AND KNOWLEDGE FROM THE WORK AT LOCAL LEVEL.



PARTICIPANTS & PARTNERS

PARTICIPANTS' PROFILE:

^{} PARTICIPANTS OF THE TRAINING COURSE/ ACTIVITY SHOULD BE 18+ YOUTH LEADERS, YOUTH WORKERS, TEACHERS, PEDAGOGUES OR NGO REPRESENTANTS.

^{} THEY MUST BE AWARE OF THE REALITY AMONG YOUNGSTERS IN THE LOCAL ENVIRONMENT OF THE NGOS;

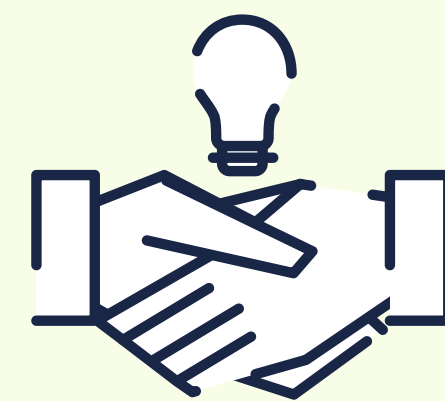
^{} IDEALLY, THEY MUST BE MEMBERS OF THE PARTNER NGOS, OR PARTNER ORGANISATIONS AT LOCAL/NATIONAL LEVEL.

^{} THEY SHOULD HAVE EXPERIENCE RELEVANT TO CONTRIBUTE TO THE TC.

^{} THEY SHOULD BE INTERESTED IN THE TOPIC AND WILLING TO SPREAD AND IMPLEMENT THEIR KNOWLEDGE FROM THE TC AFTERWARDS IN THEIR WORK OR IN THE ORGANIZATIONS.

^{} THEY ALSO NEED TO BE OPEN TO DEVELOP PARTNERSHIPS AND CREATE FUTURE NETWORKS, AS WELL AS ENGAGED DURING ALL PHASES IF THE PROJECT – IMPLEMENTATION, VISIBILITY AND FOLLOW- UP.

^{} THE PARTICIPANTS SHOULD HAVE A GOOD ENGLISH LEVEL TO COMMUNICATE AND EXPRESS THEMSELVES AND THEY SHOULD BE COMMITTED DURING ALL THE WORKING PROCESS.



ALL PARTNERS MUST SELECT PARTICIPANTS ACCORDING TO THEIR MOTIVATION TO TAKE PART IN THE PROJECT.

* IT'S **NEEDED AND CRUCIAL** TO GATHER PARTICIPANTS WHO WILL BE MOTIVATED AND ENGAGED IN THE ACTIVITIES TO GET AS MUCH AS POSSIBLE FROM THE PARTNERSHIP IN THE PROJECT.

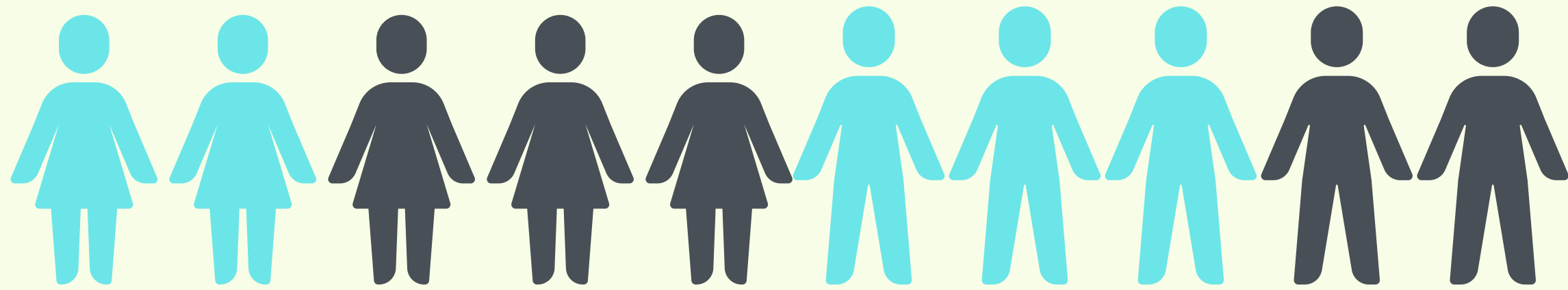
ALL PARTICIPANTS MUST FULFILL AN **APPLICATION FORM**. THE HOSTING ORGANISATION MUST HAVE THIS INFORMATION FROM EACH PARTICIPANT:

- FULL NAME;
- GENDER;
- DATE OF BIRTH AND AGE;
- PLACE OF BIRTH;
- PASSPORT, ID NUMBER WITH ISSUE AND EXPIRATION DATE;
- PHONE NUMBER AND EMAIL;
- SPECIAL NEEDS/ALLERGIES, FOOD RESTRICTION, HEALTH RESTRICTIONS.

THE APPLICATION FORM WILL BE COLLECTED BY PARTNER ORGANISATIONS AND IT SHOULD BE SENT TO THE HO UNTIL **4TH OF JANUARY 2022** TO ADMIN@WOMANANDYOUTHPOWERMENT.COM ALSO, **ALL** PARTICIPANTS MUST SIGN A CONTRACT WITH THE HOSTING ORGANISATION.



PARTNERS INVOLVED IN THE PROJECT



Name of the Organisation	Country	Nr of participants to send	Travel distance
HORS PISTES	FRANCE	3	500-1999 KM, 275 EURO
ENVIRONMENT ONLINE - GREECE	GREECE	2	2000-2999 KM, 360 EURO
COSI	ROMANIA	3	500-1999 KM, 275 EURO
YOUTH DYNAMICS	CYPRUS	2	2000-2999 KM, 360 EURO
ASSOCIACAO ALL HUMANS	PORTUGAL	3	2000-2999 KM, 360 EURO
FARM CULTURAL PARK	ITALY	2	2000-2999 KM, 360 EURO
CENTRO INTERNAZIONALE PER LA PROMOZIONE DELL'EDUCAZIONE E LO SVILUPPO ASSOCIAZIONE: CEIPES	ITALY	2	2000-2999 KM, 360 EURO
CAT	POLAND	1	500-1999 KM, 275 EURO
KulturNetz e.V	GERMANY	2	500-1999 KM, 275 EURO

**** THE FAILING OF THE PARTNERS TO ACCOMPLISH THE DEADLINES OR FIND SUITABLE PARTICIPANTS GIVES US THE RIGHT TO REPLACE THE PARTNERSHIP OR FIND REPLACING PARTICIPANTS, IN ACCORDANCE WITH THE ERASMUS+ PROGRAMME RULES.**

**** EACH ORGANISATION IS RESPONSIBLE FOR SENDING A GENDER MIXED TEAM, IN CASES OF 2 PARTICIPANTS, INVOLVING FEWER OPPORTUNITIES PARTICIPANTS.**

LANGUAGE OF THE TC

THE MAIN LANGUAGE USED DURING THE TC WILL BE **ENGLISH**.

PARTICIPANTS TAKING PART IN TRAINING COURSE MUST BE ABLE TO COMMUNICATE AND EXPRESS THEMSELVES IN ENGLISH.



HOSTING ORGANISATION: WOMAN & YOUTH EMPOWERMENT SWEDEN
CONTACT: ADMIN@WOMANANDYOUTHPOWERMENT.COM



TRAVEL

COSTS AND REIMBURSEMENT

ACCOMMODATION, FOOD AND MATERIALS - FUNDED BY THE PROGRAMME.

THIS INCLUDES BREAKFAST, LUNCH, DINNER AND TWO COFFEE BREAKS DURING THE TRAINING COURSE DATES.

HOWEVER, IT'S RECOMMENDED TO HAVE A DISPOSAL FOR DRINKS, SMALL SHOPPING, ETC.

TRAVEL COSTS

THE TRAVEL COSTS ARE BEING REIMBURSED AFTER THE TRAINING COURSE ENDS AND ALL PARTICIPANTS' RESPONSIBILITIES ARE COMPLETE.

ACCORDING TO THE PROGRAMME GUIDE, THE FINAL FINANCIAL SETTLEMENTS WILL BE BASED ON THE DISTANCE FROM THE CITY FROM WHERE THE PARTICIPANT LEFT TO THE CITY WHERE THE ACTIVITY TAKES

PLACE - STOCKHOLM, SWEDEN UP TO THE BUDGET SET BY THE PROJECT. THE REIMBURSEMENT WILL BE DONE BASED ON REAL TRAVEL COSTS, UP TO A LIMIT SET BY THE EUROPEAN COMMISSION, ACCORDING TO THE DISTANCE DONE BY THE PARTICIPANT.

(FOR MORE INFORMATION CHECK THE DISTANCE CALCULATOR ONLINE:

[HTTPS://EC.EUROPA.EU/PROGRAMMES/ERASMUS-PLUS/RESOURCES/DISTANCE-CALCULATOR_EN](https://ec.europa.eu/programmes/erasmus-plus/resources/distance-calculator_en)

AND THE LIMITED BUDGET SET BY THE PROGRAMME GUIDE).

TRAVEL BUDGET - MAXIMUM REIMBURSEMENT AMOUNT PER COUNTRY:**

- SWEDEN - DISTANCE BAND [0-9 KM] - 0 EUR
- CYPRUS, PORTUGAL, GREECE, ITALY - DISTANCE BAND [2000-2999 KM] - 360EUR
- ROMANIA, POLAND, GERMANY, FRANCE - DISTANCE BAND [500 - 1999KM] - 275 EUR

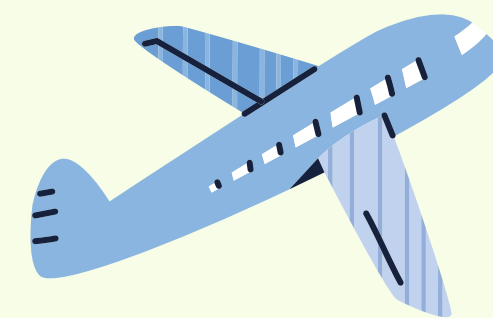
**** (THE REIMBURSEMENT AMOUNT CAN CHANGE IF THE PARTICIPANTS START THE TRAVEL FROM A PLACE WITH A DIFFERENT DISTANCE BAND TO THE VENUE - SWEDEN, THAN THE PLACE THE ORGANISATION IS SET).**

FOR DETAILED INFORMATION, CONTACT: ADMIN@WOMANANDYOUTHPOWERMENT.COM



YOUTH WORK AS A TOOL FOR INCLUSION INFO-PACK

TRAVEL...



PLEASE NOTE THAT TRAVEL COSTS WILL BE REIMBURSED ON THE BASIS OF **ORIGINAL TICKETS, BOARDING PASSES AND INVOICES/RECEIPTS FOR TRAVEL.**

- ONLY DIRECT TRAVEL FROM PLACE OF RESIDENCE TO SWEDEN WILL BE CONSIDERED (NO STOP-OVERS EXCEEDING 12 HOURS).
- ONLY THE SHORTEST WAY FROM THE DEPARTURE TO THE VENUE PLACE (SWEDEN) WILL BE REIMBURSED.
- ONLY ECONOMY CLASS TRAVEL AND PUBLIC TRANSPORTS WILL BE REIMBURSED.
- ONLY ACTUAL EXPENDITURE/TICKETS WILL BE REIMBURSED – NO PRE-PAYMENT FOR TICKETS NOT PURCHASED. THE PROJECT DOESN'T COVER TRAVEL BY TAXI, OR ANY PRIVATE MEANS OF TRANSPORTATION. PARTICIPANTS WHO ARE NOT ABLE TO BUY TICKETS ONLINE OR IN ADVANCE AND CANNOT GIVE US TICKETS BEFORE THE END OF THE TRAINING COURSE, WILL HAVE TO SEND US THE TICKETS ONCE THEY GET HOME- SCAN IT, SEND IT BY EMAIL AND SEND BY POST THE ORIGINAL TICKETS.

THE PARTICIPANTS ARE RESPONSIBLE FOR COLLECTING THE PROPER DOCUMENTATION FOR REIMBURSEMENT.

NONE OF US WOULD LIKE TO HAVE PROBLEMS WITH TRAVEL TICKETS AND REIMBURSEMENTS. DUE TO THAT FACT, ALL PARTICIPANTS MUST CONTACT THE PROJECT COORDINATOR BEFORE BUYING TICKETS IN ORDER TO GET THE CONFIRMATION THAT EVERYTHING IS ALRIGHT WITH DATES AND FLIGHTS AND THE TICKETS CAN BE REIMBURSED. JUST AFTER THAT, THE TICKETS MUST BE BOUGHT.

TICKETS BOUGHT WITHOUT THE COORDINATOR'S AGREEMENT ARE NOT ENSURED TO BE REIMBURSED.

!! ARRIVALS AFTER THE ARRIVAL DAY (13.03.2022) WON'T BE REIMBURSED.

!! DEPARTURES BEFORE THE DEPARTURE DAY (21.03.2022) WON'T BE REIMBURSED*.

PARTICIPANTS ARE REQUESTED TO BE IN THE TRAINING COURSE FROM DAY 1 MORNING TO DAY 7 EVENING.

* CONTACT THE PROJECT COORDINATOR FOR ANY QUESTIONS REGARDING THIS TOPIC.



REIMBURSEMENT

WILL BE DONE WHEN:



1. ALL THE TICKETS (ORIGINALS) WILL GET TO THE HOSTING ORGANISATION
ADDRESS: WOMAN & YOUTH EMPOWERMENT, NORREGATAN 1, 164 25 KISTA, SWEDEN.
BOX 1082.

2. THE FINAL REPORT FROM THE EC ONLINE WILL BE DONE.
*** THE REIMBURSEMENT WILL BE DONE ACCORDING TO THE ERASMUS+ PROGRAMME
RULES. THAT MEANS THAT THE PARTICIPANTS SHOULD BE ENGAGED IN 100% OF THE
PROJECT.

WE RECOMMEND YOU TO ASK FOR SUGGESTIONS WHEN YOU LOOK FOR TICKETS. SEND US
THE TRAVEL PLAN, WHEN YOU GET EVERYTHING DONE. WE ARE HERE TO HELP YOU, JUST
CONTACT US. IF YOU NEED TO FLY AFTER THE OFFICIAL TRAVEL DATES, PLEASE
CONTACT THE PROJECT COORDINATOR. TICKETS FOR TRAVEL OUT OF THE OFFICIAL
DATES BOUGHT WITHOUT APPROVAL, NEED TO BE CONFIRMED WITH THE COORDINATOR.

☆☆☆ PARTICIPANTS ARE VOLUNTARY PARTICIPATING IN THE TRAINING COURSE, DUE
THEIR WILL TO LEARN AND IMPROVE THEMSELVES AND THE ORGANISATIONS THEY
REPRESENT. THAT MEANS THEY SHOULD TAKE PART IN ALL THE ACTIVITIES AND BE
ENGAGED. FAILURE OF PARTICIPATION IN THE SESSIONS OR INAPPROPRIATE BEHAVIOR
MIGHT RESULT IN REIMBURSEMENT NOT BEING GIVEN TO THE PARTICIPANTS AND
WITHDRAWAL OF THE COURSE WITH A NOTICE PROVIDED TO THE SENDING
ORGANIZATION AND TO THE SWEDISH NATIONAL AGENCY. THE SAME IS VALID FOR THE
FAILURE TO ORGANIZE DISSEMINATION ACTIVITIES AND PROVIDE A REPORT OF THAT.

▪ THE PARTICIPANTS ARE ALSO RESPONSIBLE FOR DISSEMINATING THEIR LEARNING
ACHIEVEMENTS OF THE TRAINING COURSE AFTER IT ENDS, IN THEIR COMMUNITIES AND
SHARE THOSE RESULTS WITH THE PROJECT COORDINATOR.

YOUTH WORK AS A TOOL FOR INCLUSION INFO-PACK

VENUE OF THE TC

THE TRAINING COURSE WILL TAKE PLACE IN STOCKHOLM, AT COMFORT HOTEL KISTA, ISAFJORDSGATAN 21, 164 40 KISTA

THE TRAINING ACTIVITIES START ON 13TH OF MARS 2022 IN THE MORNING AND FINISHES ON 21TH OF MARS 2022 IN THE EVENING. ARRIVAL DAY IS ON 13.03.2022 AND DEPARTURE DAY IS ON 21.03.2022 IN THE MORNING.

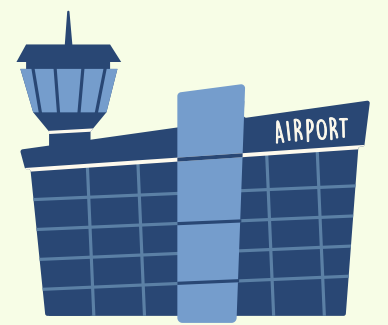


HOSTING ORGANISATION: WOMAN & YOUTH EMPOWERMENT SWEDEN
CONTACT: ADMIN@WOMANANDYOUTHPOWERMENT.COM

IMPORTANT ADDRESS YOU MIGHT FIND IN THE MAPS

AIRPORTS CLOSE TO THE VENUE:

ONCE PARTICIPANTS ARE SELECTED (THIS HAS TO BE CONFIRMED BY THE SENDING ORGANISATIONS), THEY SHOULD LOOK FOR FLIGHTS TO THE FOLLOW AIRPORT:
STOCKHOLM.



ACCOMODATION

THE HOSTING ORGANISATION WILL PROVIDE YOU DURING THE TRAINING:

⇒ ACCOMMODATION – SLEEPING IN MIXED NATIONALITIES (2-3 PEOPLE SHARED ROOMS AND BATHROOM).

ACCOMMODATION WILL BE PROVIDED FROM ARRIVAL DAY EVENING (NIGHT OF 13.03.2022) TO DEPARTURE DAY AFTER BREAKFAST (21.03.2022 MORNING).

HEALTH INSURANCE

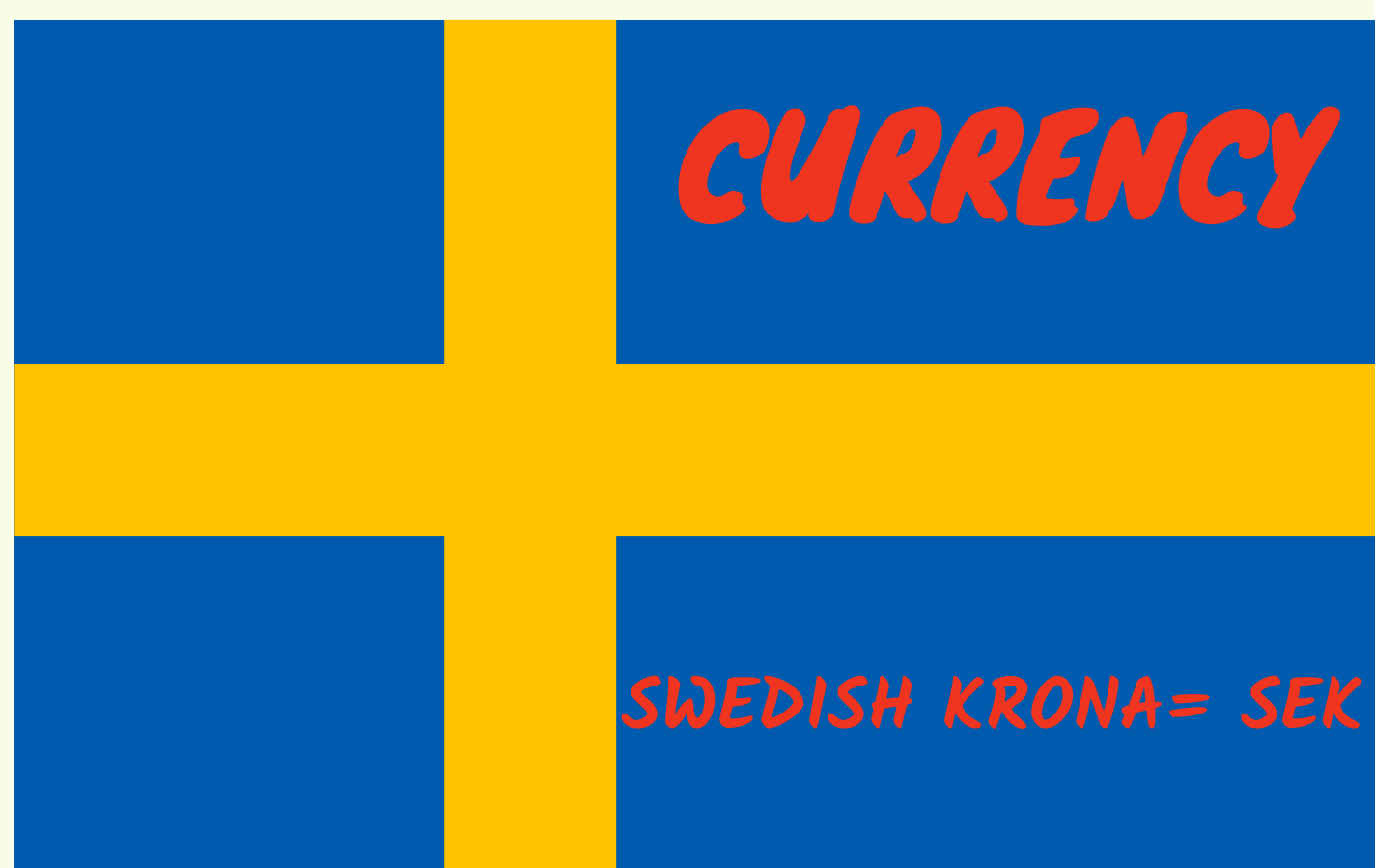
MAKE SURE THAT COMING TO SWEDEN YOU HAVE A **VALID HEALTH INSURANCE**, ELIGIBLE TO HAVE A MEDICAL TREATMENT ABROAD! THIS IS ABSOLUTE CRUCIAL IF YOU WANT TO JOIN THE PROJECT. YOU CAN OBTAIN **EUROPEAN HEALTH INSURANCE CARD** (EU, FOR FREE IN EACH OF THE PROJECT PARTNER COUNTRIES) OR BUY TRAVEL INSURANCE COVERING POTENTIAL MEDICAL NEEDS. COSTS REGARDING HEALTH INSURANCE ARE NOT REIMBURSED BY THE PROJECT. FOR MORE INFORMATION PLEASE VISIT:
[HTTP://EC.EUROPA.EU/SOCIAL/MAIN.JSP?CATID=559](http://ec.europa.eu/social/main.jsp?catid=559)

PREPARATION OF PARTICIPANTS

THE SENDING ORGANISATION SHOULD MEET WITH THE PARTICIPANTS AND PREPARE THEM FOR THE ACTIVITY/ PROJECT – EXPLAIN THEM THE KAI ACTION AND THE INTERCULTURALITY OF THE EVENT. THE PARTICIPANTS SHOULD ALSO BE SUPPORTED REGARDING TRAVEL PLANNING AND ANY GET ANSWERS ON ANY QUESTIONS THEY MIGHT HAVE.

WHAT TO BRING?

- ALL TRAVEL DOCUMENTS
- ENERGIZERS WHICH CAN BE IMPLEMENTED DURING THE TRAINING COURSE
- GOOD MOOD AND POSTIVE ENERGY
- BOARD GAMES, GAMES WE CAN DO INSIDE DURING OUR FREE TIME, ETC



WOULD YOU LIKE TO TAKE PART IN THE TC?

*FEEL FREE TO CONTACT THE PARTNER
ORGANISATION IN YOUR COUNTRY. IF THEY
WILL HAVE FREE PLACE, THEY'LL GET BACK
TO YOU*

